

EVENTS



EVENTS

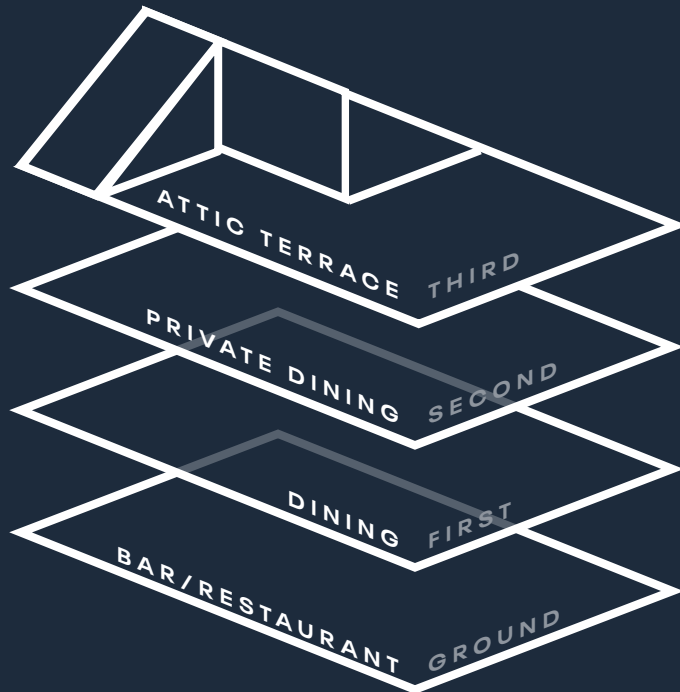
GOLD, NOTTING HILL

Gold is a modern European neighbourhood restaurant and late-night bar. It is situated in the heart of Notting Hill at 95-97 Portobello Road – once the site of the historic Portobello Gold public house.

This unique part of west London is famed for its multicultural mix of artists, designers and musicians. Gold's approach to dining aims to reflect this discerning, vibrant and cosmopolitan spirit.

The menu is full of colour, flavour and freshness, with a focus on produce-led, minimal-intervention cooking. Dishes are cooked in wood ovens and over open flame and served to share.





Gold is set out over four floors. Guests will discover a ground floor with a bar and open kitchen area, leading to a lavish green space which merges outside with in. This garden room is filled with plants and trees and is fitted with a retractable glass roof. It is a place of tranquil escape, like nowhere else in Notting Hill.

The first floor has both a drinks lounge and dining area. The dual-aspect room is flooded with light during the day and then becomes warm and cosy at night, with roaring log fire, music and a place to drink until late. A softer palette of terracotta and off-white materials creates a relaxed vibe, perfect for sipping cocktails at your leisure while looking out onto Portobello Road.

The second floor is home to a private dining room. The space is great for daytime use and is intimate and relaxed at night. A breakout bar area connects to the main room and becomes the perfect snug area for pre- and post-dinner drinks.

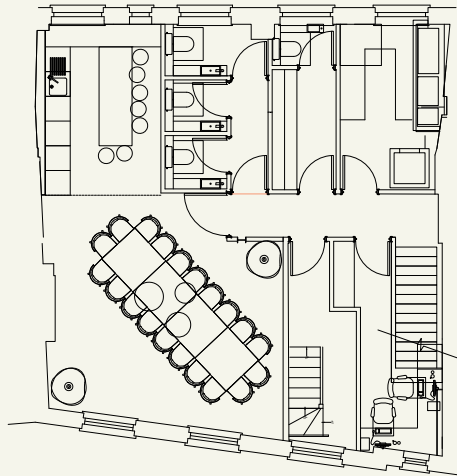
The third floor holds an attic terrace available for up to fifteen walk-in diners. It is overlooked by the beautiful sand-coloured spire of St Peter's Church on Kensington Park Road. To the west, there are sweeping views across the crescents and garden squares of Portobello.

PRIVATE DINING ROOM

PRIVATE DINING ROOM

This intimate 485-square-foot dining room can host a maximum of 22 guests for a seated lunch or dinner event. Connected to the main room is an informal, private bar. The room is ideal for evening parties and for both celebratory and corporate events.

Capacity – 22



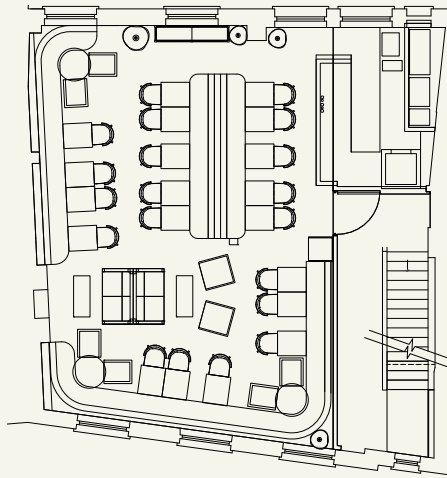


FIRST FLOOR

FIRST FLOOR

Over 1,000 square feet, perfect for large sit-down lunches and available to hire exclusively on Mondays.

Capacity – 50



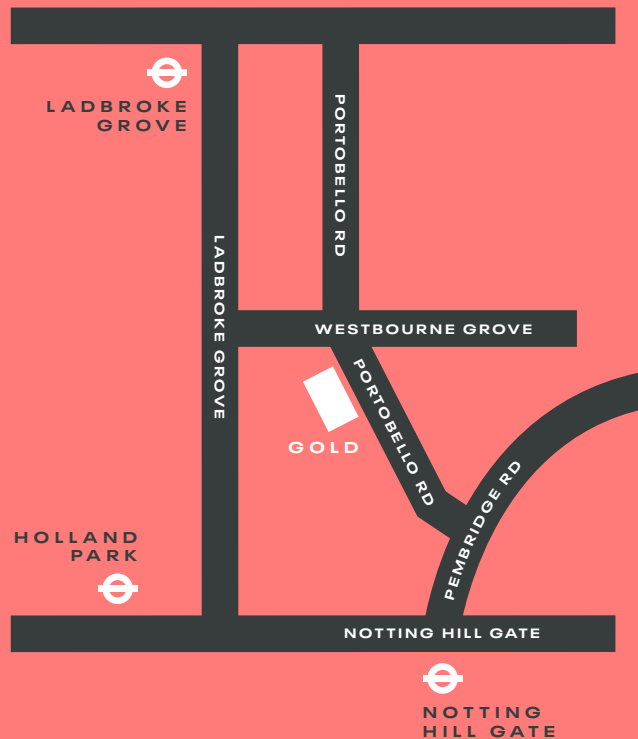


ATTIC TERRACE

The third floor holds an attic terrace available for up to fifteen walk-in diners. It is overlooked by the beautiful sand-coloured spire of St Peter's Church on Kensington Park Road. To the west, there are sweeping views across the crescents and garden squares of Portobello.

Capacity – 15





OPENING TIMES:

Monday	12:00 – 00:30
Tuesday	12:00 – 00:30
Wednesday	12:00 – 00:30
Thursday	12:00 – 00:30
Friday	12:00 – 01:00
Saturday	12:00 – 01:00
Sunday	12:00 – 23:00

GET IN TOUCH

T 0208 075 8000
E events@GoldNottingHill.com
W GoldNottingHill.com
[@GoldNottingHill](https://www.instagram.com/GoldNottingHill)

95-97 Portobello Road, Notting Hill, London W11 2QB